

# Galleries share creative riches

## Greg Hocking "Uno Volta"

IT can be said that every time a photographer presses the shutter button a one off image is produced. Of course we know that with the aid of the darkroom or computer this unique "one off" can be replicated time and time again. For a photographer to disregard the ability of making multiple copies from a negative or digital file is a difficult and ambiguous decision. Painters often say that their paintings are never really finished and that they could easily keep painting if time permitted. Often photographers too, keep working on their images, a little more burning in here or dodging there, make a print and if not happy repeat the whole process again. Personally, "Uno Volta" has been a challenge. To make "one off" images that once produced are final. You might say... complete  
Tel: 9386 9066  
[www.monart-studio.com](http://www.monart-studio.com)

Christine Hingston's latest works at Gallery 360 capture the artist's joyful sense of life in the Australian bush. Travels down a country road, an afternoon football match and other artworks provide a light-hearted view of rural life. Christine finds the unique colours of Australia are a continuing source of inspiration. Christine Hingston's work is on display at Gallery 360, 360 Hay Street, Subiaco. Call 9381 6577 or visit [www.gallery360.com.au](http://www.gallery360.com.au).

Kingfisher Gallery presents a special exhibition with paintings and photographs revealing the spirit of the Burrup.

Painter Lynne Tinley and photographer Jack Rodda took a journey into the Pilbara and explored Murajuga (traditional name for the Burrup) to find a sense of a relationship between the rock art, the landscape, the wild life and the ancient people.

"Magic of the Burrup" celebrates the wilderness and the energy, the spiritual significance of the whole site which the artists say is in danger as much as the artworks themselves. The opening of the exhibition will feature sound-art compositions by Andy Copeman from his experience of the Burrup, and the event will be officially opened by Dr Carmen Lawrence.

As an event which aims to promote public awareness of the Burrup Peninsula and the threat to it and its ancient rock art by industrial development, 'Magic of the Burrup' is supported by the National Trust, and the Australia Business Arts Foundation who is managing tax-deductible donations for the cause.

This is an event not to be missed! Please contact Kingfisher Gallery on 9486 9822 or Lynne Tinley herself on 9336 1429 for interviews. We are open daily 11-4, except for public holidays.

Kudditji Kngwarreye - Gallery1;  
Utopia Collection - Gallery2  
4 April - 30 April 2008.

Gallery1: Senior Anmatyerre artist Kudditji Kngwarreye (born c 1928) bridges cultural boundaries with his contemporary interpretation of ancestral stories. Capturing the changing moods and seasons of his desert country with sometimes bright, sometimes subtle blocks of colour, his paintings sing in a way reminiscent of abstract expressionist, Mark Rothko, and of later works of his sister, Emily Kame Kngwarreye. Gallery2: Utopia Collection showcases selected works of well-known artists from Utopia, including Abie Loy, Jeannie Mills Pwerle and Minnie Pwerle.

Information: (08) 9335 8265.  
Exhibitions can be viewed online at: [www.japingka.com.au](http://www.japingka.com.au).

POLY(P)TYCH is a series of paintings that investigate the politics of Identity through the de-construction of religious iconography, cultural mythology and personal experience.

Marek Szyler asks whether 'our identities are purely constructs of circumstance' and whether, indeed, 'there exists a core of self after these constructs are peeled away'?

The series is eclectic, agonizing and very much Marek Szyler, an artist who has spent his life painting murals and theatre sets for the likes of Chrissie Parrot and Graham McLean ('Sound of Music'), biding his time until his first major solo exhibition, POLY(P)TYCH.

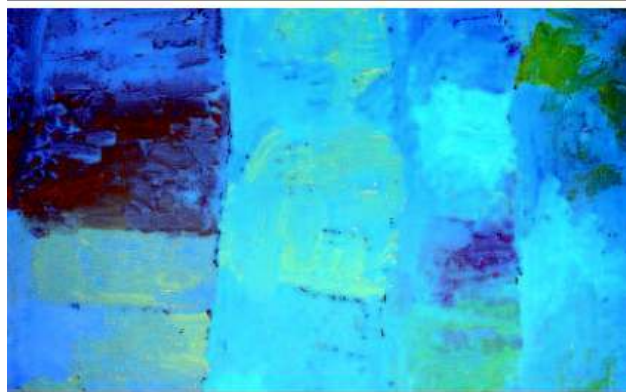
Call 9388 9960 or visit [W:www.elementsartgallery.com.au](http://W:www.elementsartgallery.com.au).



Elements Gallery



Gallery 360



Japingka Gallery



Kingfisher Gallery



**Monart Studio Gallery**